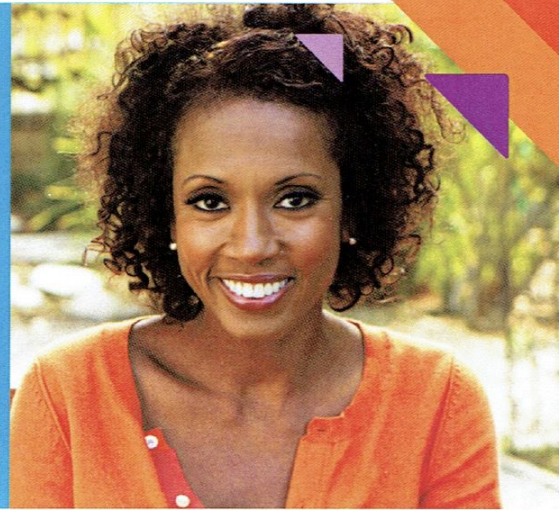


You Can Help Us Learn More About Endometriosis



If you're a woman living with endometriosis, or you suspect you might have it and are scheduled to have surgical treatment, you may be eligible to participate in the ROSE Study. Your immediate family (siblings, parents and children), if they do not have endometriosis, may also be eligible to join the study. ROSE Study researchers are exploring what causes endometriosis and if a better treatment can be developed.

To participate in the study, you must be:

1. Older than 18 years
2. Not pregnant or breastfeeding

To participate in the study, you must be:

1. Share medical/demographic information
2. Answer questions about how endometriosis affects her life
3. Provide a blood sample (from the arm)
4. Offer a sample of menstrual flow that can be collected at home using a simple procedure; this collection is optional
5. Allow ROSE Study researchers to collect excess endometrial tissue samples from a past or future surgery

Participants will be compensated for their participation.

If you would like to learn more about how you may play a part in improving the understanding of endometriosis, please contact a research nurse at 516-562-ENDO (3636), email ROSE@northwell.edu, or visit us at ResearchOutSmartsEndo.org.

ROSE

Research OutSmarts Endometriosis

The ROSE Study is sponsored in part by
the Endometriosis Foundation of America.



Feinstein Institute for Medical Research
Northwell Health™

Pelvic
Rehabilitation
MEDICINE

 ENDOMETRIOSIS
FOUNDATION OF
AMERICA